



# The Altrusan

Monthly Newsletter of Altrusa International, Inc. of Spartanburg, South Carolina

Volume 48 Number 4

September 2009

## President's Message

Dear Altrusans,

I can't believe its fall already, school has been in session for over a month and Halloween and Thanksgiving are just around the corner.

I'm looking forward to the social at Sarah's on Thursday night - a great way to relax and catch up with everyone!

Make-A-Difference Day is October 24 and our co-chairs have been busy making plans for this event.

Also, the annual Talent Sale and Auction is just around the corner, if you haven't done so already mark your calendars for Nov. 12! Its always a fun time

Be sure to attend our next meeting, as Dr. Tracy Revels will be our speaker.

See you soon.

*Pat*

## Altrusa Social

*Guests welcome, just let Sarah know how many so that she has a good food count!*

**Date:**

*Thursday, October 1*

**When:**

*5:30 p.m.*

**Where:**

*Sarah's House  
200 Ellington Drive, Spartanburg*

**Cost:**

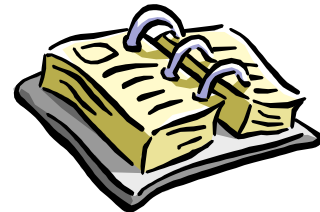
*\$5.00 per person*

**R.S.V.P.**

*Sarah at [dnsbroyles@aol.com](mailto:dnsbroyles@aol.com) or  
576-0479.*



*Be sure to mark your  
calendars  
with the  
following  
Club dates:*



**Mon., Oct. 5, 2009 - 12:30 p.m.**

Board Meeting  
Fatz Cafe Southport Rd.

**Wed., Oct. 14, 2009 - Noon**

Regular Meeting  
Marriott DuPré Restaurant  
Dr. Tracy Revels  
Wofford History Professor

**Sat., Oct. 24, 2009**

**Make A Difference Day**

**Wed., Oct. 28, 2009 - Noon**

Regular Meeting  
Marriott DuPré Restaurant  
United Nations Day  
Converse Model League Program



*2009- 2011 District Three Theme*

*Altrusans in Action:*

*Our Light Shines Bright*

**Altrusa International of Spartanburg, SC**  
**Foundation Monthly Statement**

Foundation Savings Account September 1, 2009 (Interest rate 1.50%)

**Restricted:**

Broyles.....	\$205.00
Environment .....	\$4,124.87
Hicks .....	\$1,100.00
Lever .....	\$305.00
Literacy .....	\$465.00
Mag/Quinn .....	\$1,813.484
Park Hills.....	\$1,600.00
Sherman.....	\$1,410.00
Trees.....	\$300.00

**Non Restricted**

Carry over .....	\$6,953.69
Interest .....	\$408.48
<b>Total .....</b>	<b>\$18,685.52</b>

**NBSC CD due 7-22-2010 (1.99%)**

Unrestricted .....	\$1,038.29
Restricted "rainy day" .....	\$4,153.17
<b>Total .....</b>	<b>\$5,191.46</b>

**Operating Account**

First Citizens .....	\$9,075.00
----------------------	------------

*If you would like a copy of the complete report, please contact Linda Walker, Treasurer*

**Operating Budget**  
**Monthly Reconciliation**

First South Operating Account (June 1, 2009)	\$ 129.85
First South PMA Account	
Adams Award	\$ 219.15
International Convention	\$ 1,041.72
Interest	\$ .00
President's D Fund	\$ 280.75
Rose Carryover	\$ .00
Operating Carryover	
2006-07	\$10,195.44
2007-08	\$ 598.41
Twichell	
2006-2007	\$ 2,924.33
2007-2008	\$ 943.64
2008-2009	\$ 1,283.68
Barnes & Noble	
2006-2007	\$ 653.40
2007-2008	\$ 582.00
<b>2009-2010 Dues</b>	<b>\$3,375.00</b>
New Members	\$200.00
Fees	\$94.00
Late Fees	\$10.00
<b>Balance</b>	<b>\$ 22,401.52</b>

*Yielding: 1.75% r*

ALTRUSA INTERNATIONAL, INC. OF  
 SPARTANBURG, SOUTH CAROLINA  
LEADERS IN SERVICE

**President:**

Pat Smith  
 4806 Mattingly Court  
 Spartanburg, SC 29301  
 (864) 576-6362  
 E-mail: pat.smithpa@gmail.com

**President Elect:**

Ava Hughes  
 E-mail: ahughes@spartanarts.org

**Vice President:**

Nancy Bernard  
 E-mail: Nancy@rsnpromo.com

**Secretary:**

Cathy Conner  
 E-mail: connerca@wofford.edu

**Corresponding Secretary**

Lucy Quinn  
 E-mail: quinnlb@wofford.edu

**Treasurer:**

Mildred Finch  
 E-mail: mildredf@att.net

**Directors:**

Barbara Bishop (2011)  
 E-mail: btbishop78@aol.com  
 Irma Massengill (2010)  
 E-mail: irma.massengill@firstcitizenonline.com  
 Jane Johnson (2010)  
 E-mail: jjohnson0828@yahoo.com

**Parliamentarian:**

Linda Robison  
 E-mail: llrobison@windstream.net)

**Past President:**

Joe Ann Lever  
 E-mail: jalever@bellsouth.net

**FOUNDATION OFFICERS**

President: Gayle Magruder  
 Vice President: Joe Ann Lever  
 Treasurer: Sarah Broyles  
 Secretary: Lucy Quinn  
 Director: Pat Smith



On October 24 each year, many countries celebrate United Nations Day. This day marks the anniversary of the United Nations Charter, which was ratified on October 24, 1945 when France, the Republic of China, the Soviet Union, the United Kingdom, and the United States, the five permanent members of the Security Council signed the charter. The establishment of the United Nations is celebrated in a number of ways, such as concerts, flying the United Nations Flag in important places, and debate on the relevance of the work of the United Nations.

We will celebrate United Nations Day this year on October 28 by having Zareen Khan, a Converse student from Pakistan, speak about the United Nations.

### 2009 - 2010 Altrusa Proposed Club Budget

#### INCOME

<b>Dues</b>	
35 @ \$100 (less \$25 for a couple)	\$3,475.
<b>New Members</b>	
6 @ \$147. (International dues, processing fee, District Dues, Name tags/kit/pin)	\$882.
<b>Fundraisers</b>	
Barnes & Noble	\$411.
Talent Sale	\$1,700.
Ushering	\$1,600.
<b>Total</b>	<b>\$8,068.</b>
<b>EXPENSES</b>	
<b>Dues – Continuing Members</b>	
International- 35 @ \$55.	\$1,925.
District – 35 @ \$20.	\$700.
<b>Dues – New Members</b>	
International dues – 6 @ \$55.	\$330.
Processing Fee – 6 @ \$10.	\$60.
District dues – 6 @ \$20.	\$120.
Name Tags/Membership Kit/ Pin – 6 @ \$47.	\$282.
<b>Fees</b>	
International Convention	\$20.
District Conference – 3 @ \$20.	\$60.
<b>Delegates</b>	
International (Association)	\$500.
District	\$800.
<b>New Clubs</b>	\$20.

#### **Administration**

President	\$50.
Treasurer	\$25.
Communications/Postage/Stationery	\$75.
Post Office Box	\$44.
Internet/Web Hosting	\$117.
President’s Gift	\$75.
President’s Pin	\$300.
Favors for Convention and Conference	\$100.

#### **Speakers**

Gifts	\$200.
Meals	\$260.

#### **Committees**

Archives/Scrapbook	\$125.
Initiation/Orientation/Installation of Officers	\$50.
Newsletter	\$25.
Public Relations	\$25.
Social	\$150.
Sunshine	\$150.
Yearbook	\$500.
Altrusan of the Year	\$75.

#### **Membership**

Meals (for potential new members)	\$130
Postage/Misc.	\$25.

#### **Annual Meeting**

\$150.

#### **50th Anniversary**

\$500.

#### **Miscellaneous**

\$100.

**Total** **\$8,068.**

#### WEB INFORMATION

International: [www.altrusa.com](http://www.altrusa.com)  
 District Three: [www.districtthree.org](http://www.districtthree.org)  
 User Name: Altrusa/Password: District (*Capitalization is important.*)  
 Spartanburg: [www.altrusaspartanburg.org](http://www.altrusaspartanburg.org)

## Converse Ushering Schedule

*If you haven't volunteered to usher yet, please look over the attached schedule and fill in where there are holes in our schedule. To add your name, please contact Sarah Broyles at [DNSbroyles@aol.com](mailto:DNSbroyles@aol.com) or 576-0479*

### **Monday, October 19 - 5:45 p.m.**

#### *Spartan High Orchestra*

- 1.\* Van Van Wagoner
- 2.\* Marianne VanWagoner
3. Sarah Broyles
4. Kelly French

### **Thursday, December 3 - 6:45 p.m.**

#### *Festival of Lessons*

- 1.\* Sarah Broyles
- 2.\*
3. Gail Hackett
- 4.

### **Saturday, December 5 - 5:45 p.m.**

#### *"Messiah"*

- 1.\* Kelly French
- 2.\* Lucy Quinn
3. Joe Ann Lever
4. Sarah Broyles

### **Friday, December 11 - 5:45 p.m.**

#### *Nutcracker*

- 1.\* Sarah Broyles
- 2.\*
- 3.\*
4. Gail Hackett
- 5.
6. Marianne VanWagoner
7. Joe Ann Lever
8. Van VanWagoner

### **Saturday, December 12 - 1:45 p.m.**

#### *Nutcracker*

- 1.\* Kelly French
- 2.\* Lucy Quinn
- 3.\* Jan Benjamin
4. Jane Johnson
5. Bobbie Schoss
6. Norm Schoss
7. Glenna Luca
8. Pat Smith

### **Sunday, December 13, - 1:45 p.m.**

#### *Nutcracker*

- 1\* Jane Johnson
2. Glenna Luca
- 3\*
4. Mary Tygett
- 5.
- 6.
- 7.
8. Pat Smith

### **Monday, December 14 - 5:45 p.m.**

#### *SHS College Concert*

- 1\* Marianne VanWagoner
2. Van VanWagoner
3. Sarah Broyles
4. Pat Smith

### **Tuesday, December 15 - 5:45 p.m.**

#### *Dorman Concert*

- 1.\* Joe Ann Lever
2. Jane Johnson
3. Gail Hackett
4. Sarah Broyles

## Environmental Corner



### ***The Spartanburg Web site is now Green!***

*Our Web site provider was not able to generate wind power onsite, however, they offset their energy use by purchasing Renewable Energy Certificates (RECs). The energy grid must maintain a full supply of power without overflowing. When wind power is added to the grid through RECs, the amount of energy produced by fossil fuels is reduced. As a result, our offices and data centers are 100% powered by renewable energy, which means our site is completely green. Our commitment prevents the release of 2,660 metric tons of carbon dioxide into the atmosphere each year. That's equivalent to planting nearly 2,390 acres of trees, or removing 510 cars from the road.*



## Bethlehem Center Want List

**Non-Perishable food items:** Pasta and sauces, peanut butter jelly cereals, canned meats, salmon, tuna, \$10 Bi-Lo gift cards

**Cleaning supplies:** facial tissues, liquid hand soap, trash bags

**Plastic bags:** sandwich and gallon sizes

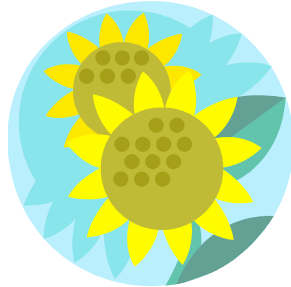
**Paper goods products**

**School Supplies:** wide-ruled loose leaf paper and pencils

**Other:** postage stamps

**Store Gift Cards:**

Wal\*Mart, Sam's Club,  
Home Depot or Lowes



## Altrusa Birthdays



September

September 3 - Orma Massengill

September 28 - Jane Johnson

## Altrusa Anniversaries

September

September 1980 - Louise Parris

September 2005 - Cathy Bryant

September 2007 - Barbara Bishop



Altrusa International, Inc.  
of Spartanburg, South Carolina  
P.O. Box 6221  
Spartanburg, SC 29304-6221